



OAK

PORTO

Leisure & Nature





A LEISURE AND NATURE SANCTUARY

OAK comprises 17 independent apartments that will enjoy of a private condo with 1.400+ yd², swimming pool, padle court, gym, kids playground, besides all comfort and beauty of a high-end architecture project. A true sanctuary for leisure and nature right at a Porto's central neighborhood.

Rua Freire de Andrade, 135, Porto



1.200 m2 of Garden





OAK
PORTO

WELL BEING

- Highest energy efficiency level (class A+) from superior performance materials and equipment
- Smart layout - all apartments benefit from sunrise and sunset solar exposure
- Maximum attention to acoustic comfort with the use of high-quality materials, such as double-glazed windows, acoustic brick walls and insulation between floors
- Garage ready to receive wall charger

Playground



Swimming Pool





OAK
PORTO

QUALITY

- Countertop - Vila Real Granite & Silestone
- Complete Kitchen and laundry - Bosch or Siemens
- Multilayer wood floor Kahrs Carvalho Gustaf
- Aluminum window with double glazing and thermal break
- Ceramic RECER
- Armored door Diere
- MDF cabinets with oak veneer or white lacquered
- Heat pump



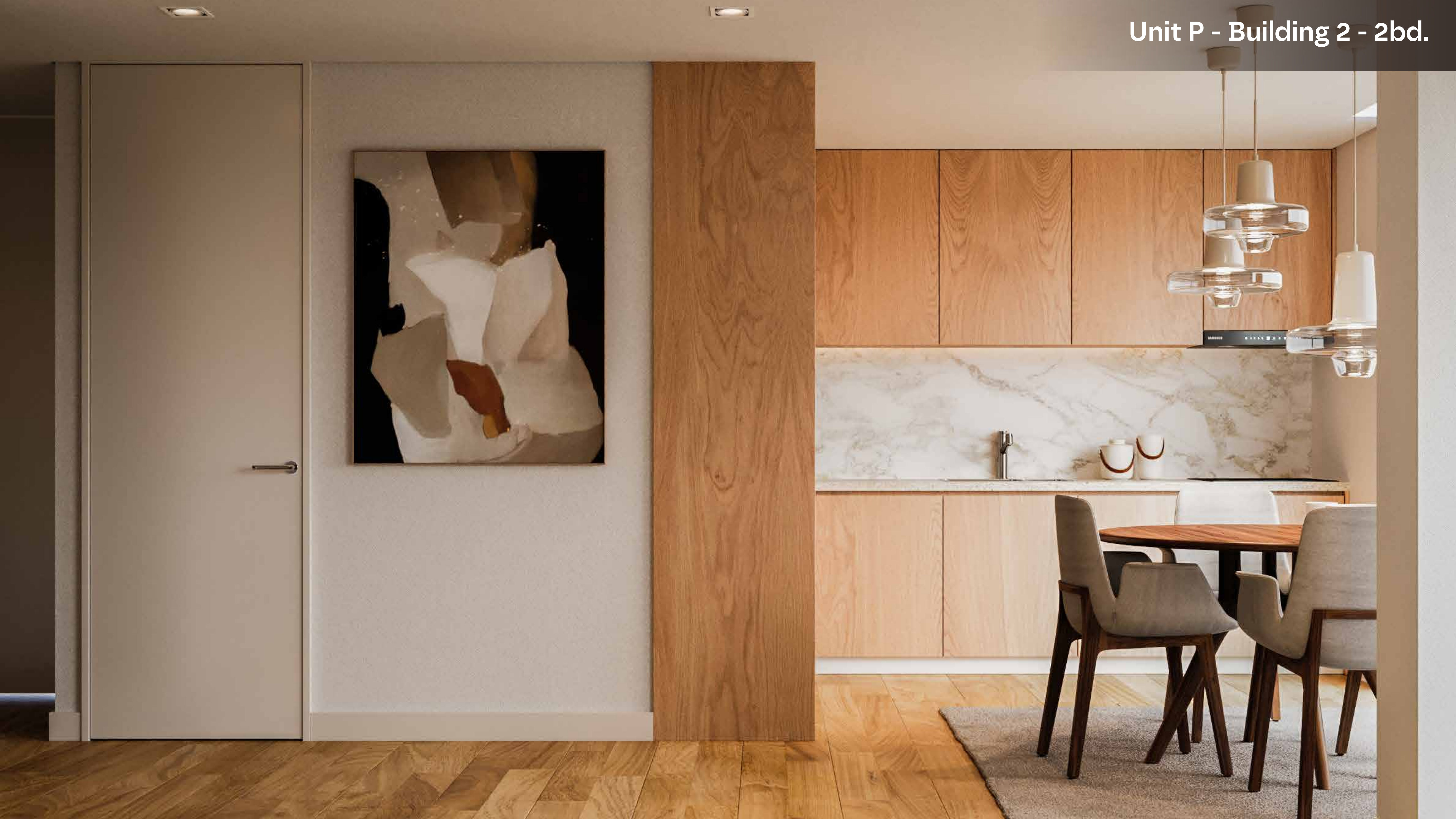


Facade



Entrance





Unit E to N - Building 2 - 1bd.+1



Unit E to N - Building 2 - 1bd.+1



Private Balcony



Padel Court





Unit D - Building 2 - 2bd.



Unit D - Building 2 - 2bd.



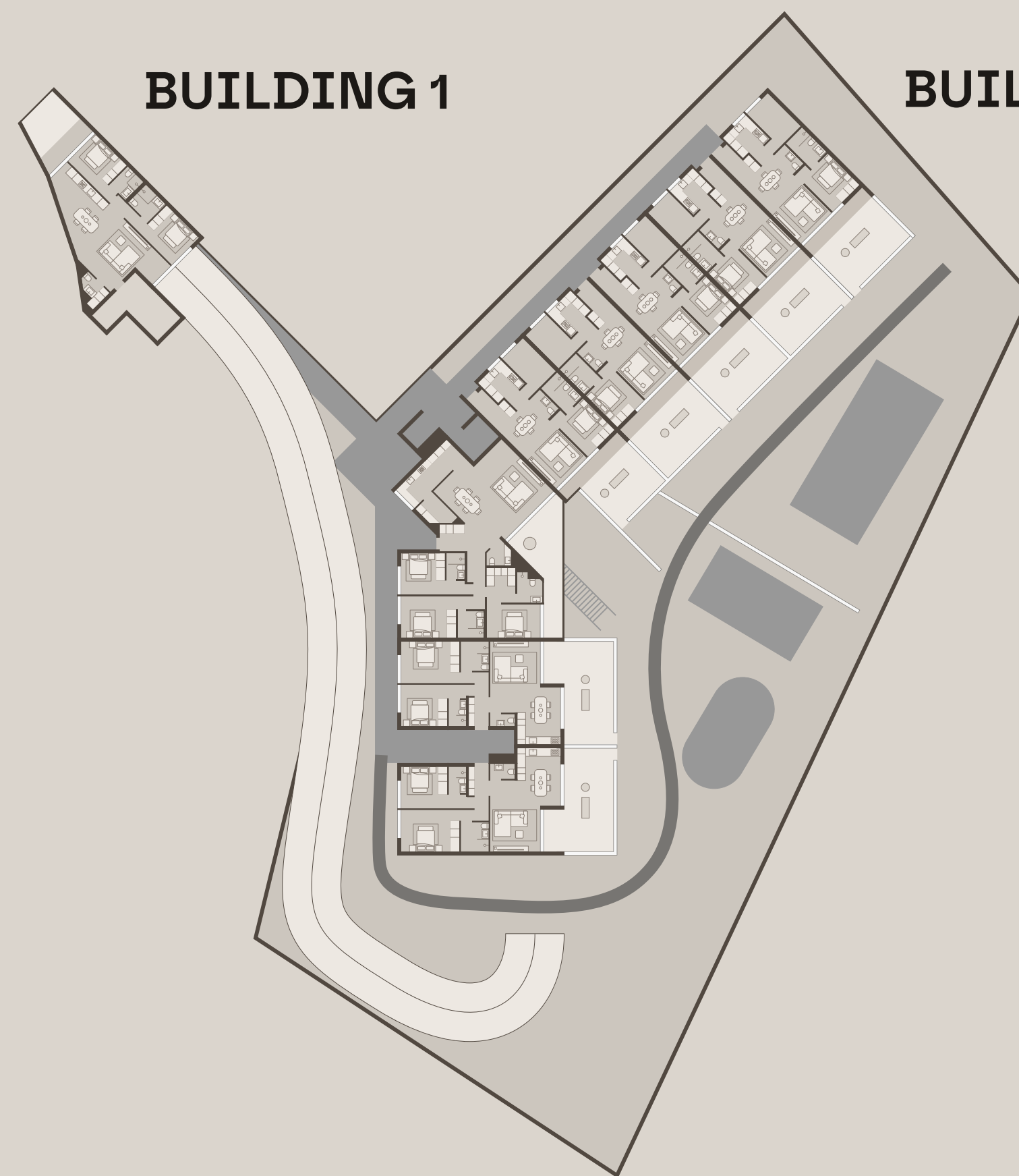
MAP OF AREAS

BUILDING	UNIT	FLOOR	TYPE	INDOOR PRIVATE	BALCONY	GARAGE	GARDEN	TOTAL
1	A	1	2bd.	79,7 m ²	4,5 m ²	1		84,2 m ²
1	B	2	2bd.	79,7 m ²	4,5 m ²	1		84,2 m ²
1	C	3	1bd.	62,7 m ²	8,0 m ²	1		70,7 m ²
2	D	Penthouse	2bd.	85,1 m ²	3,0 m ²	1		88,1 m ²
2	E	Penthouse	1bd.+1	62,0 m ²	6,2 m ²	1		68,2 m ²
2	F	Penthouse	1bd.+1	62,0 m ²	6,2 m ²	1		68,2 m ²
2	G	Penthouse	1bd.+1	62,0 m ²	6,2 m ²	1		68,2 m ²
2	H	Penthouse	1bd.+1	62,0 m ²	6,2 m ²	1		68,2 m ²
2	I	Penthouse	1bd.+1	62,0 m ²	6,2 m ²	1		68,2 m ²
2	J	Garden	1bd.+1	62,0 m ²	6,2 m ²	1	23,7 m ²	91,9 m ²
2	K	Garden	1bd.+1	62,0 m ²	6,2 m ²	1	23,7 m ²	91,9 m ²
2	L	Garden	1bd.+1	62,0 m ²	6,2 m ²	1	23,7 m ²	91,9 m ²
2	M	Garden	1bd.+1	62,0 m ²	6,2 m ²	1	23,7 m ²	91,9 m ²
2	N	Garden	1bd.+1	62,0 m ²	6,2 m ²	1	16,9 m ²	85,1 m ²
2	O	Garden	3bd.	128,7 m ²	21,7 m ²	2		150,4 m ²
2	P	Garden	2bd.	80,9 m ²	3,0 m ²	1	27,5 m ²	111,4 m ²
2	Q	Garden	2bd.	80,9 m ²	3,0 m ²	1	27,5 m ²	111,4 m ²



BUILDING 1

BUILDING 2





2bd. - BUILDING 1

FLOOR 1 and 2
UNIT: A and B

Gross Indoor Private Area: 79,7 m²

Balcony: 4,5 m²

2 Suites

1 Parking space

Powder Room





1bd. - BUILDING 2

INDOOR PRIVATE
UNIT: C

Gross Indoor Private Area: 62,7 m²

Balcony: 8,0 m²

1 Suites

1 Parking space

Powder Room





2bd. - BUILDING 2

INDOOR PRIVATE
UNIT: D

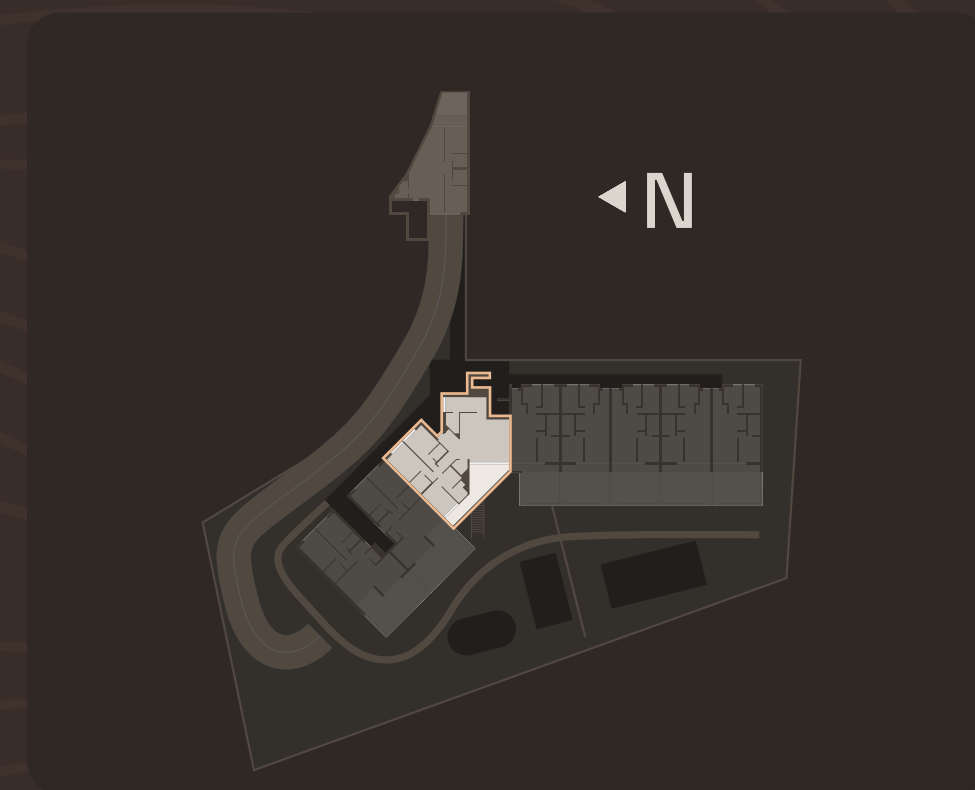
Gross Indoor Private Area: 85,1 m²

Balcony: 3,0 m²

2 Suites

1 Parking space

Powder Room





3bd. - BUILDING 2

GARDEN FLOOR
UNIT: O

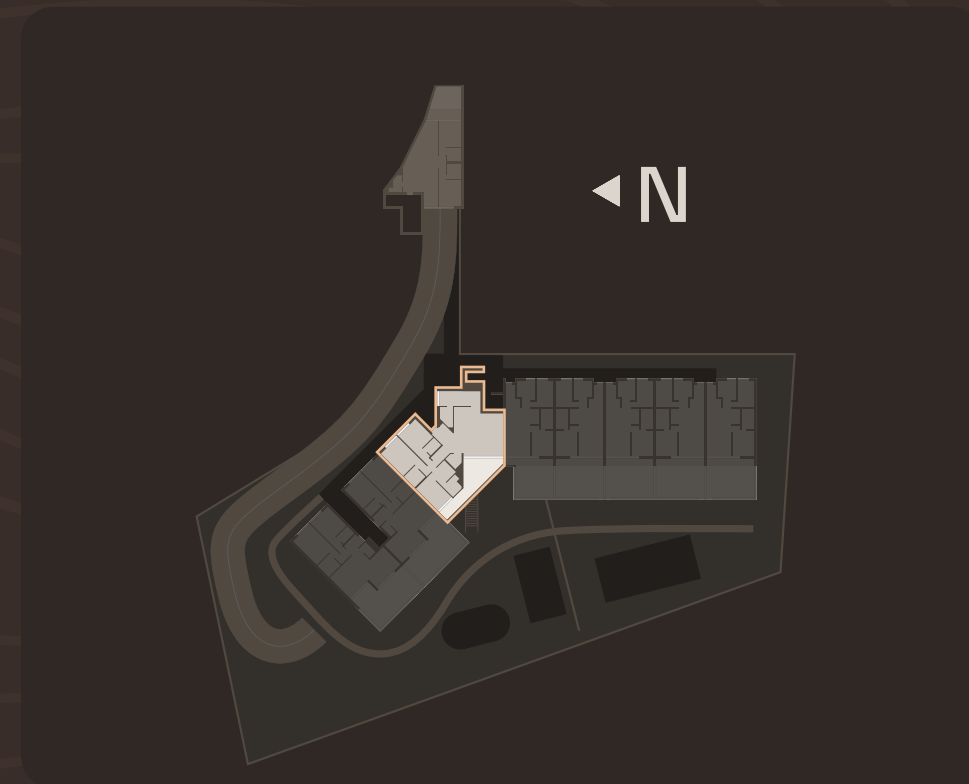
Gross Indoor Private Area: 128,7 m²

Balcony: 21,7 m²

3 Suites

2 Parking space

Powder Room





2bd. - BUILDING 2

GARDEN FLOOR
UNIT: P and Q

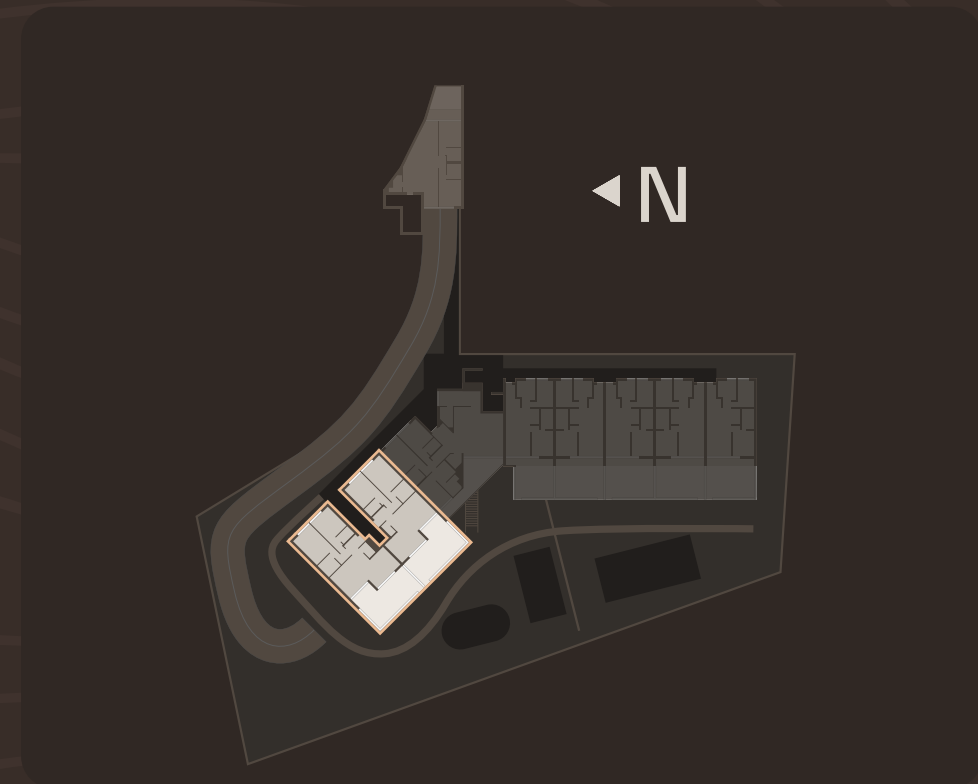
Gross Indoor Private Area: 80,9 m²

Balcony: 3,0 m²

2 Suites

1 Parking space

Powder Room





1bd.+1 - BUILDING 2

GARDEN FLOOR AND PENTHOUSE
UNIT: E to N

Gross Indoor Private Area: 62 m²

Balcony: 6,2 m²

1 Suites

1 Parking space

Powder Room





OAK
PORTO

Roads and Highways

1 VCI: 700m [59CG + 6PF Porto]

Public Transportation

2 Metro: 900m [596C + 8M Porto]

3 Bus Stop: 230m [598H + XG Porto]

Retail

4 Shopping Cidade do Porto: [593C + X4 Porto]

5 Pingo Doce: 250m [598H + PX Porto]

6 Froiz: 500m [597H + JF Porto]

7 Continente: 600m [597H + 7J Porto]

8 Mercadona: 850m [5979H + 5X Porto]

9 Pharmacy: 270m [598H + GR Porto]

Education

10 Surpresa do Bebê: 170m [598G + W7 Porto]

11 Colégio CBE Porto: 200m [598H + R4 Porto]

12 Creche Liga dos Combatentes: 400m [597F + 6W Porto]

13 Externato Sol Nascente: 500m [598F + 59 Porto]

14 Colégio N. Senhora da Conceição: 230m [597G + XV Porto]

15 Basic School: 450m [597M + C8 Porto]

16 Escola Infantil A Flor: 400m [599F + CQ Porto]

Health

17 Solinca: 350m [597F + PQ Porto]

18 Hospital da Prelada: 900m [59CC+ 7C Porto]

19 Lusíadas: 1200m [594F + VJ Porto]

Restaurants

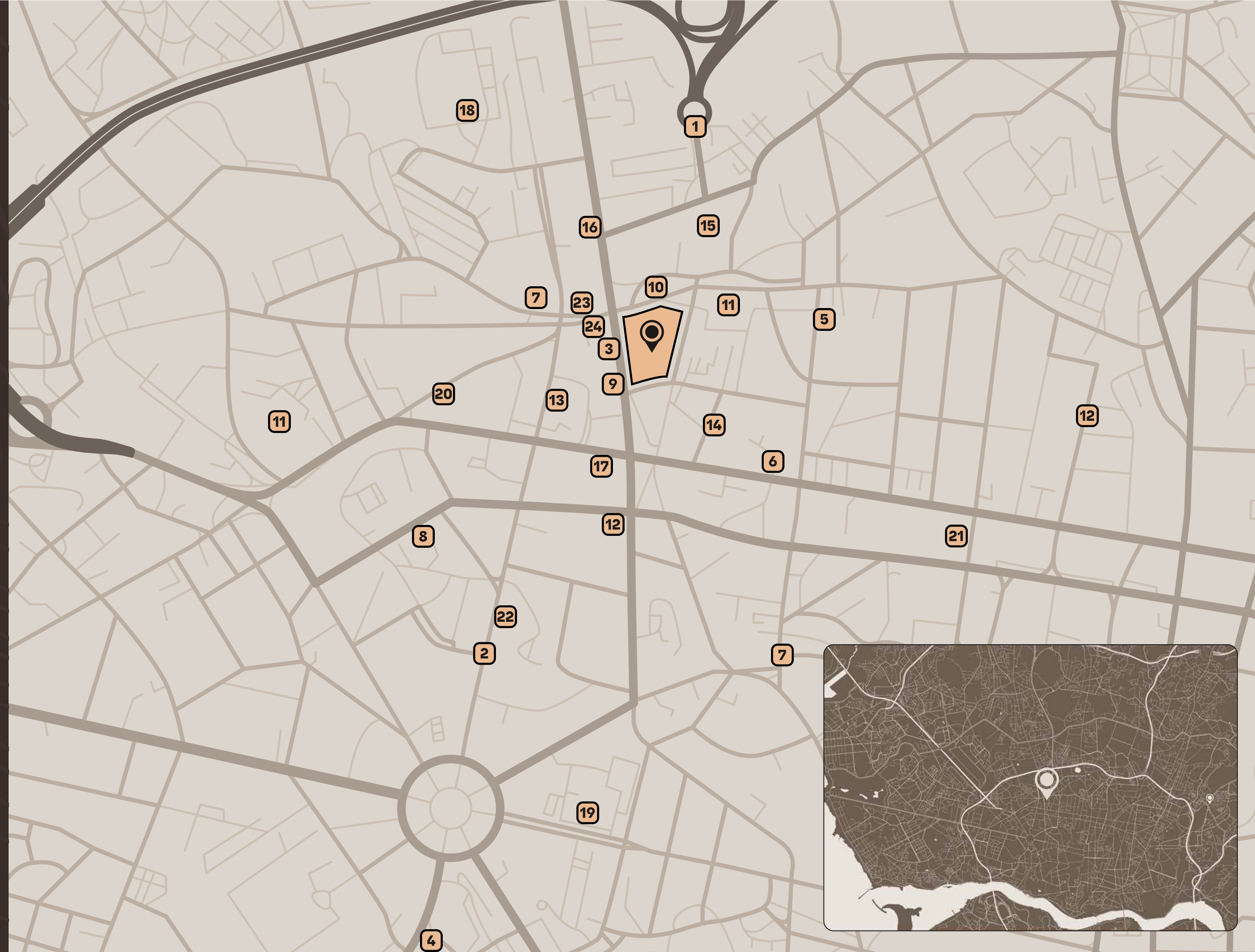
20 Essência: 650m [598C + 67 Porto]

21 Casa Cartola: 950m [597M + 4C Porto]

22 Cheiro Verde: 950m [596C + FQ Porto]

23 Brasaria do Carvalhido: 300m [598F + RH Porto]

24 Nova Real Confeitaria: 300m [598F + PM Porto]



FINISHING MATERIALS AND EQUIPMENT

GENERAL

- **Facade:** Aluminum slats by Fiberwood or similar, brown finish
- **Window Frames:** Aluminum with double glazing
- **Entrance Door:** Security door by Diere or similar
- **Other Equipment:** Heat pump, video intercom, and air conditioning system

COMMON AREAS

- **Flooring:** Ceramic and microcement (granite type)
- **Walls:** Painted and oak veneer in the entrance hall
- **Cabinets:** Oak veneer

LIVING ROOM & BEDROOM

- **Flooring:** Multi-layered wood by Jular Kahrs Oak Gustaf or similar
- **Walls:** Painted
- **Doors and Living Room Cabinets:** White lacquered

DISCLAIMER: The information contained in this brochure is merely indicative and does not constitute any agreement and may be object of change without prior notice for technical, commercial or legal reasons.



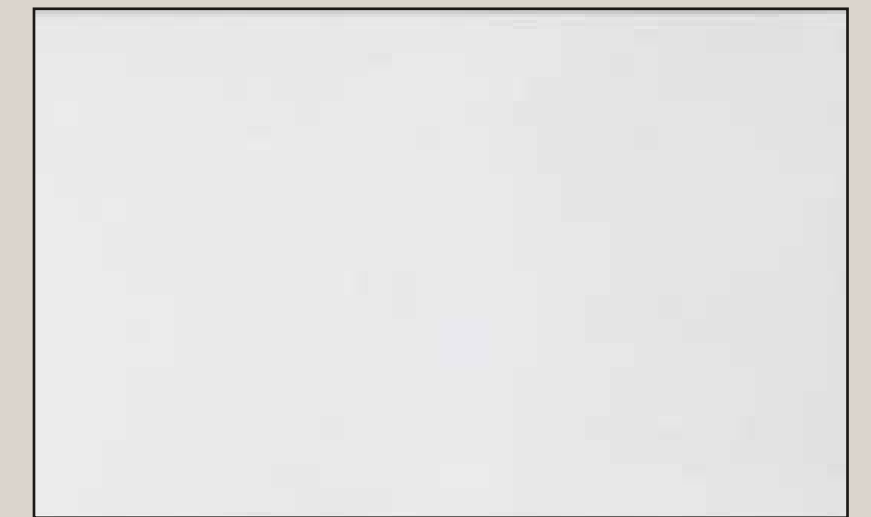
Cabinets
Oak veneer



Flooring
Wood



Street Facade
Slatted aluminum



Living Room Doors and Cabinets
White lacquered



Window Frames
Brown aluminum



Outdoor Flooring
Granite microcubes

FINISHING MATERIALS AND EQUIPMENT

KITCHEN

- Cabinets: Oak veneered MDF
- Countertops: Vila Real granite or similar
- Appliances (Bosch or Siemens brand): Fridge-freezer, hob, oven, microwave, dishwasher, washing machine

BATHROOMS

- Floors and Walls: Ceramic by RECER or similar
- Countertops: Silestone or similar
- Cabinets: White lacquered

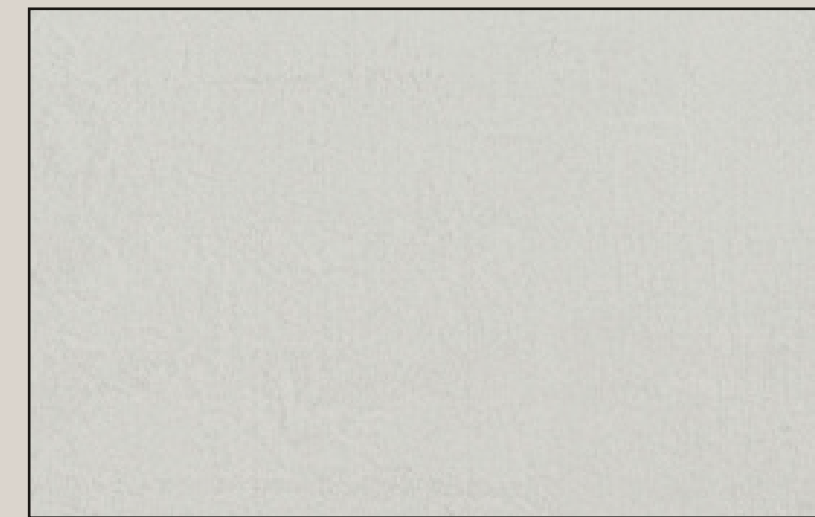
DISCLAIMER: The information contained in this brochure is merely indicative and does not constitute any agreement and may be object of change without prior notice for technical, commercial or legal reasons.



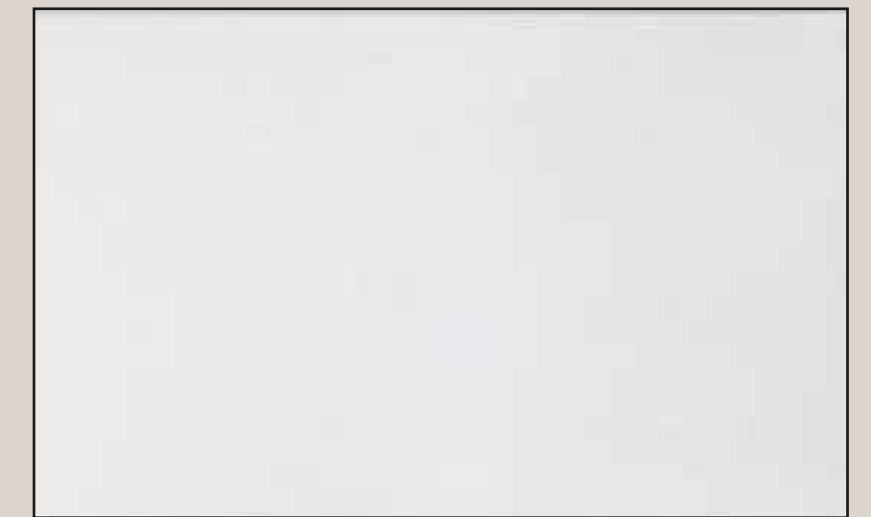
Kitchen Cabinets
Oak veneer



Bathroom Countertop
Silestone



Bathroom Floor and Wall
RECER ceramic



Bathroom Cabinets
White lacquered



Kitchen Countertop
Vila Real granite



OAK
PORTO
Leisure & Nature



DISCLAIMER: The information contained in this brochure is merely indicative and does not constitute any agreement and may be object of change without prior notice for technical, commercial or legal reasons

Developer: Teoriapresente, LDA.
R. Entreparedes, 45 - Porto

A company controlled by Cabrália Incorporadora de Imóveis
cabraliaportugal.com/empreendimentos

Aurora Centennial
auroracentennial.com.br